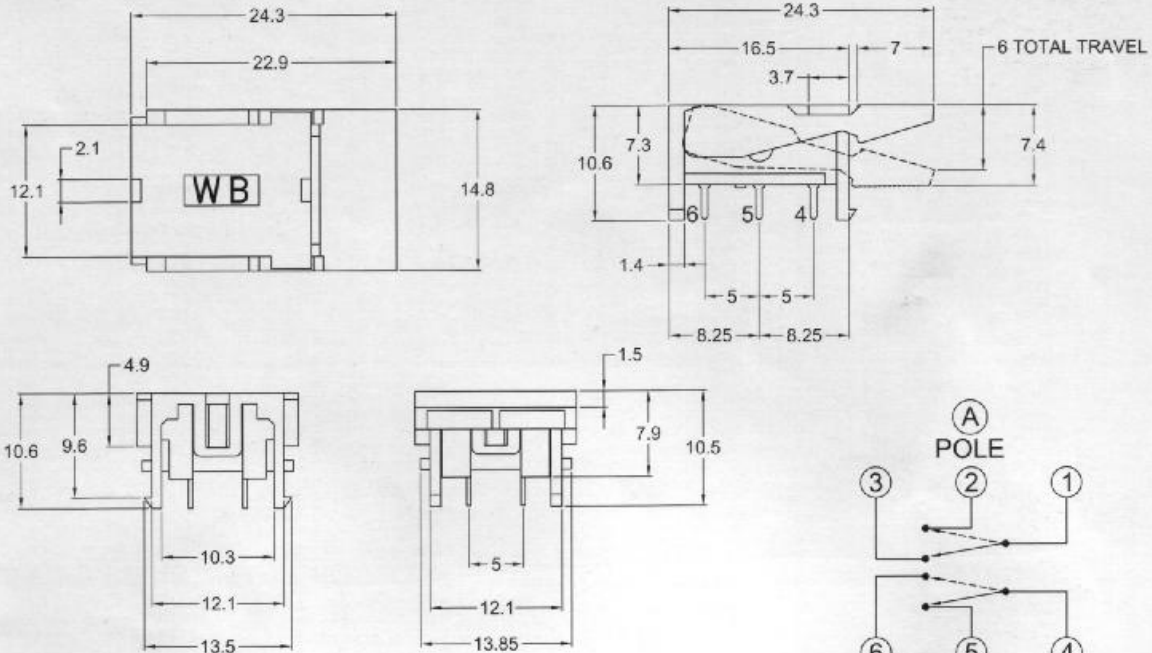


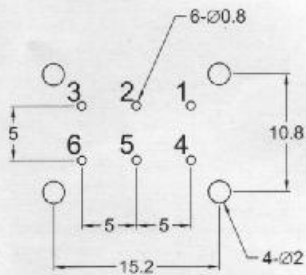
# HS SERIES TELEPHONE-HOOK SWITCH



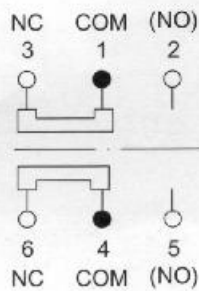
1. RATING : 36 V DC , 0.1 mA .
2. OPERATING TEMPERATURE : -10°C ~ 60°C .
3. OPERATING FORCE : 100 gf MAX .
4. CONTACT RESISTANCE ( INITIAL PERFORMANCE / AFTER LIFETIME ) :  
50 mΩ MAX / 1Ω MAX .
5. INSULATION RESISTANCE : 500 V DC , 100 MΩ MIN .
6. OPERATING LIFE : 300,000 CYCLES .



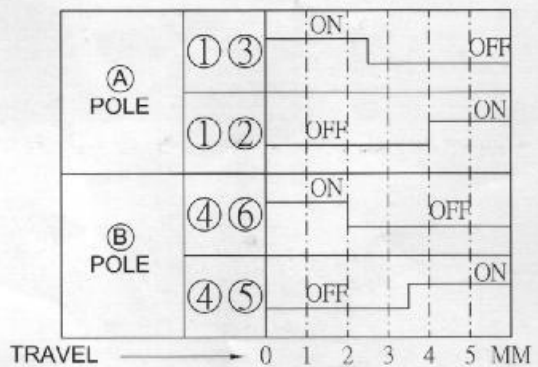
P.C.B LAYOUT



SCHEMATIC



SWITCH SEQUENCE



OPERATING FORCE

* 8	80g
10	100g
12	120g
15	150g

\* :Standard

## HOW TO ORDER

SERIES      OPERATING FORCE

