

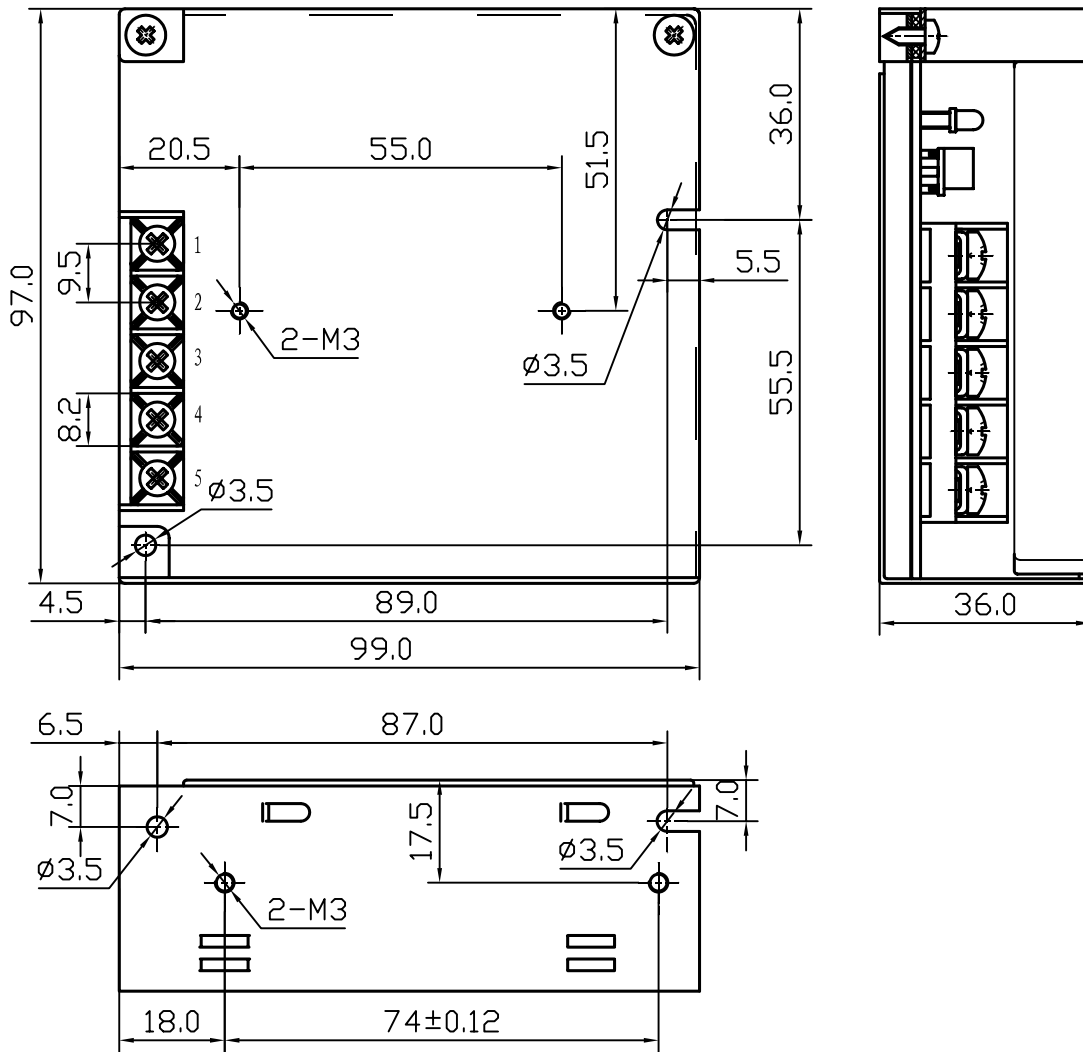
Features:

- High efficiency, high reliability
- Universal AC input / Full range
- 100% full load burn-in test
- Protection: Short circuit / Over load / Over voltage
- Fixed switching frequency at 56 KHz
- Cooling by free air convection
- 2 years warranty
- Dimensions: 99*97*36mm(L*W*H)



MODEL		SKS-25-5	SKS-25-12	SKS-25-15	SKS-25-24
OUTPUT	DC VOLTAGE	5V	12V	15V	24V
	VOLTAGE TOLERANCE	±2%	±1%	±1%	±1%
	RATED CURRENT	5A	2.1A	1.7A	1.1A
	CURRENT RANGE	0-5A	0-2.1A	0-1.7A	0-1.1A
	RATED POWER	25W	25.2W	25.5W	26.4W
	RIPPLE & NOISE	50mVp-p	100mVp-p	100mVp-p	100mVp-p
	DC ADJUSTMENT RANGE	-5%, +10%	±10%	±10%	±10%
	SETUP, RISE, HOLD TIME	800ms,50ms,10ms/115VAC 300ms,50ms,80ms/230VAC at full load			
INPUT	VOLTAGE RANGE	85~264 VAC 47~ 63 Hz; 120~370VDC			
	AC CURRENT	0.6 A/115 V 0.35A/ 230 V			
	EFFICIENCY	72%/115VAC	76%/115VAC	77%/115VAC	80%/115VAC
	INRUSH CURRENT	Cold start 15A/115V 30A/230V			
	LEAKAGE CURRENT	<0.75 mA/240VAC			
PROTECTION	OVER LOAD	110%~160% Protection type: Fold back current limiting, recovers automatically after fault condition is removed.			
	OVER VOLTAGE	115%~135% Protection type: hiccup mode, recovers automatically after fault condition is removed.			
ENVIRONMENT	WORKING TEMP., HUMIDITY	-10℃~+60℃; 20%~90 %RH			
	STORAGE TEMP., HUMIDITY	-20℃~+85℃; 10%~95 %RH			
	VIBRATION	10~500Hz, 2G 10min./1cycle, period for 60min, X, Y, Z each along axes			
SAFETY	WITHSTAND VOLTAGE	I/P-O/P: 3KVAC I/P-FG: 1.5KVAC O/P-FG: 0.5KVAC			
	ISOLATION RESISTANCE	I/P-O/P, I/P-FG, O/P-FG: 100M Ohms/500VDC			
STANDARD	SAFETY STANDARD	Design refer to UL1012, TUV EN60950			
	EMC STANDARD	Design refer to EN55022, EN61000-3-2, -3, EN61000-4-2, 3, 4, 5; ENV50204, EN55024			
OTHERS	WEIGHT	0.39Kg			
	PACKING	45pcs/18Kg/0.9CUFT			
NOTE	<ol style="list-style-type: none"> 1. All parameters NOT specially mentioned are measured at 230VAC input, rated load and 25℃ of ambient temperature. 2. Ripple & noise are measured at 20MHz of bandwidth by using a 12" twisted pair-wire terminated with a 0.1 μ & 47 μ parallel capacitor. 3. Tolerance: includes set up tolerance, line regulation and load regulation 4. The power supply is considered a component which will be installed into a final equipment. The final equipment must be re-confirmed that it still meets EMC directives. 				

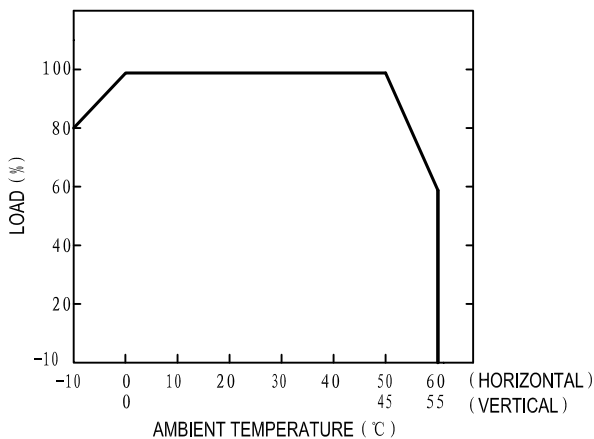
■ Outline and Dimension:



Terminal Pin No. Assignment:

Pin No.	Assignment	Pin No.	Assignment
1	DC OUTPUT -V	3	FG \oplus
2	DC OUTPUT +V	4, 5	AC INPUT

■ Derating Curve



■ Static Characteristics (24V)

